

Clackamette Park

From Portland take McLaughlin Blvd south about to Oregon City. About ¼ mile after crossing bridge over Clackamas River turn right at Mc Donald's (Clackamette Drive) then right at stop. Enter Clackamette Park on left and drive straight to boat ramp parking area.

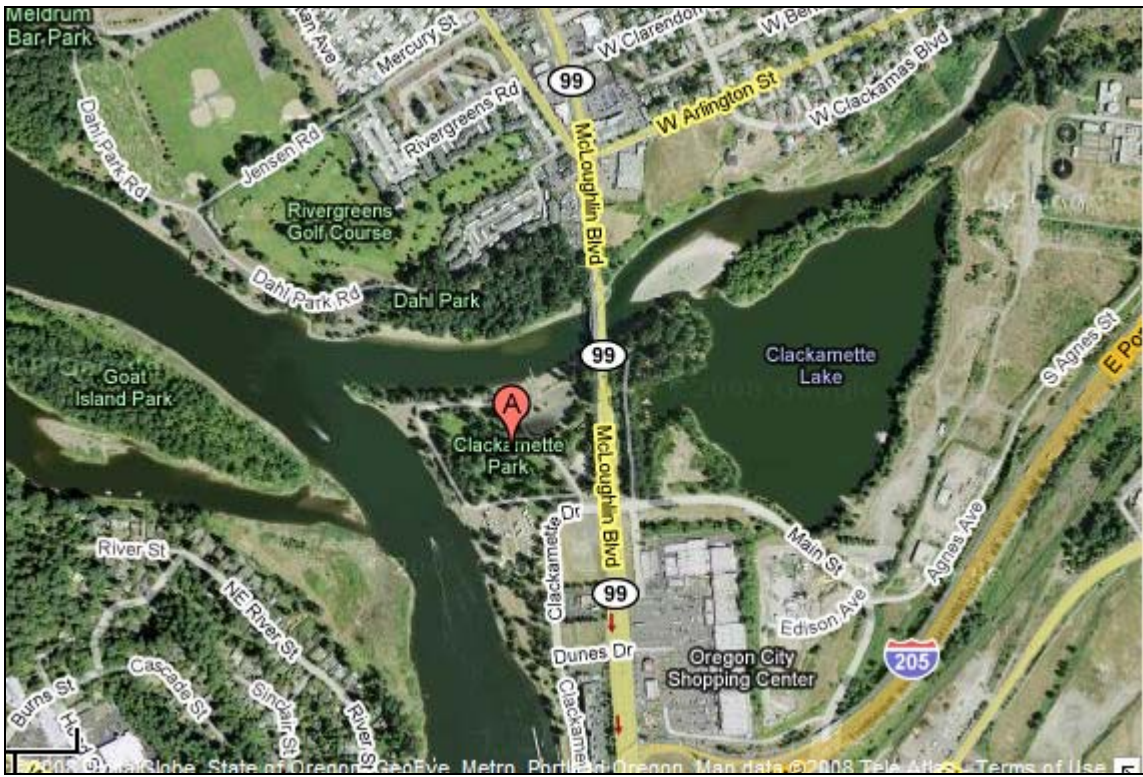
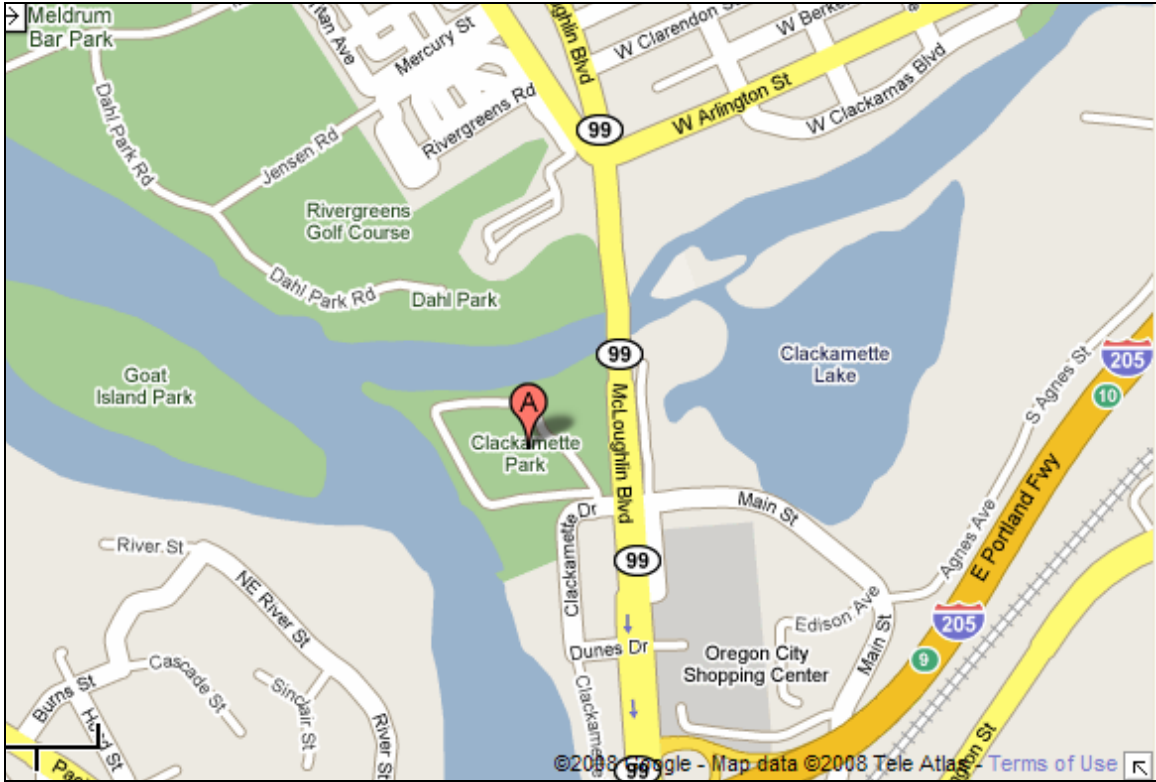


Columbia River Fishing Adventures

Buddy Dupell (503) 490-3099

Buddy@columbiariversturgeonguides.com

www.columbiariversturgeonguides.com



Columbia River Fishing Adventures
Buddy Dupell (503) 490-3099
www.columbiariversturgeonguides.com